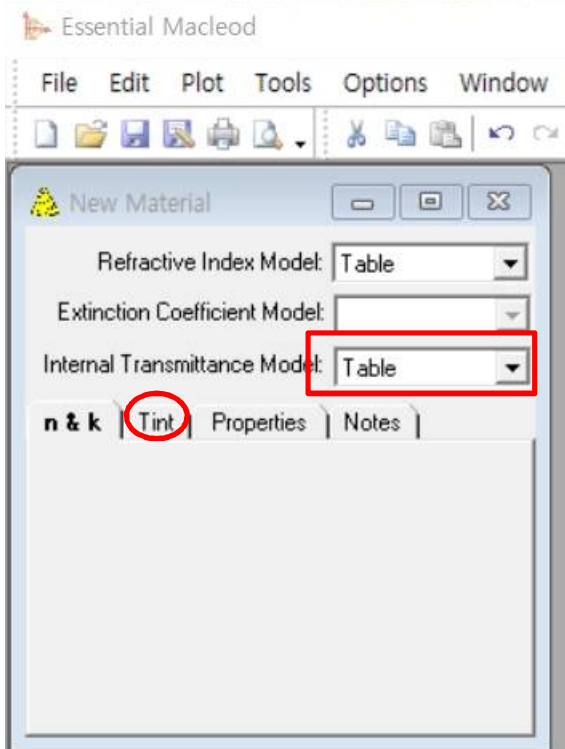
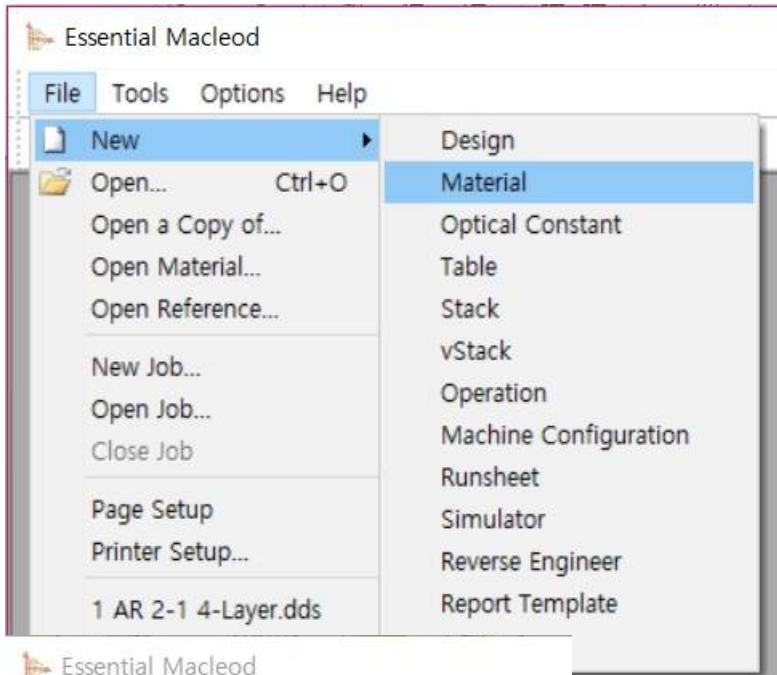


흡수 층이 있는 Coating

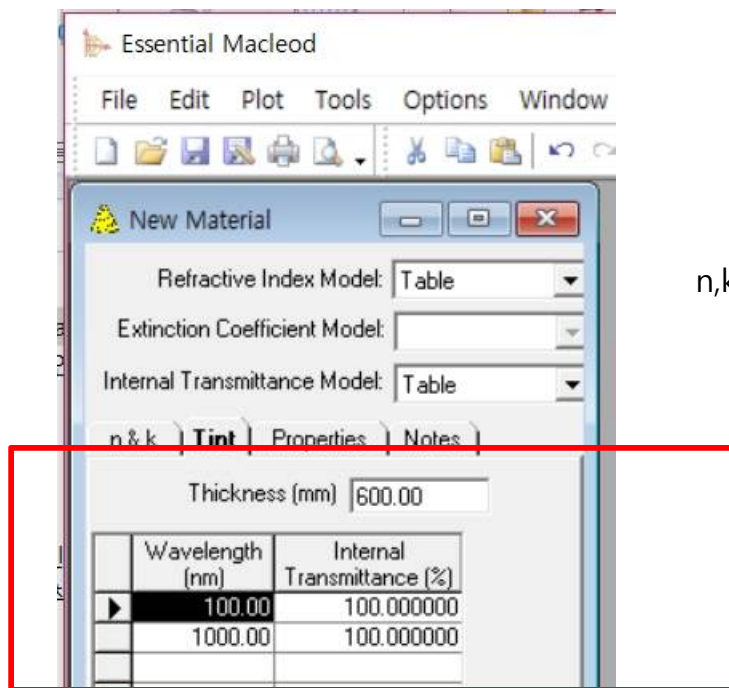
흡수 층의 n and k 와 내부 투과율 data를 하나의 Material data로 생성

File > New > Material

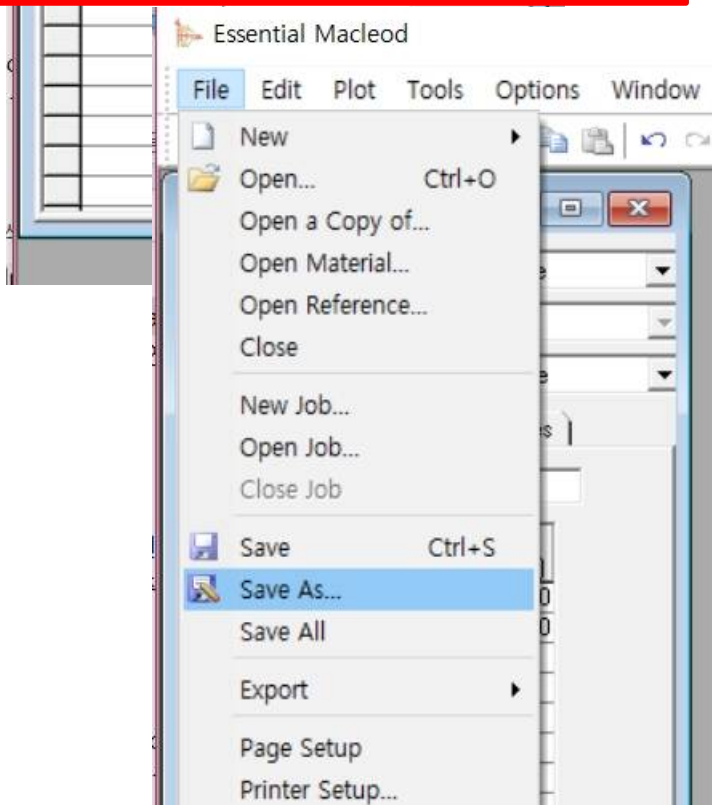


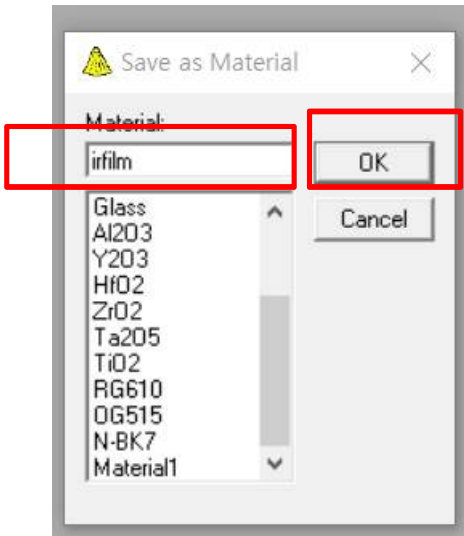
Internal Transmittance Model을 Table로 설정, "Tint" Tab이 보이게 한다.

“Tint ” Tab data 입력



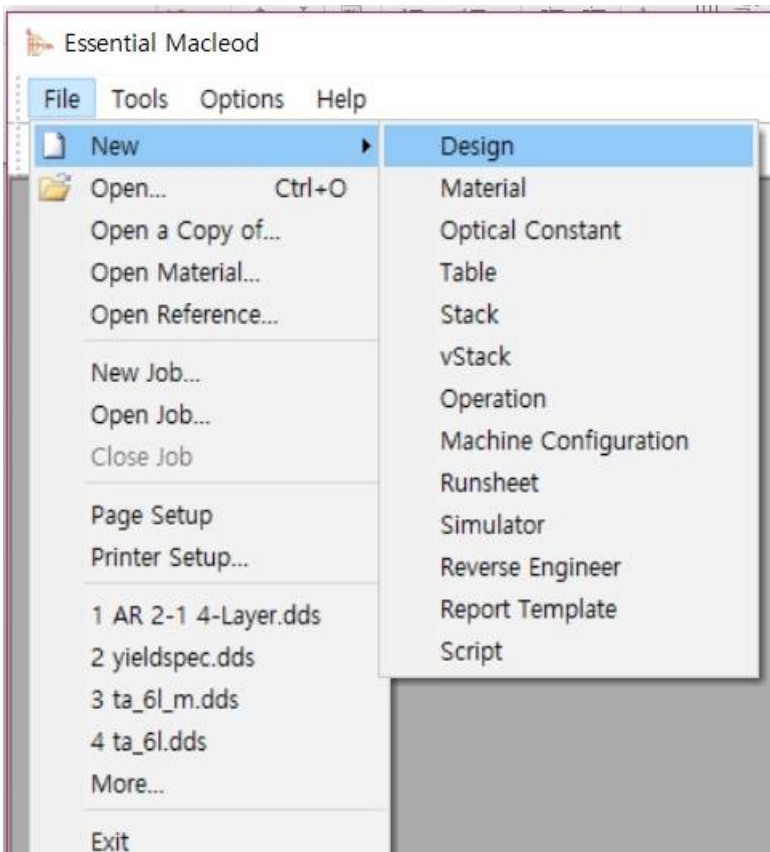
n,k 값은 일반 물질 data 입력과 동일



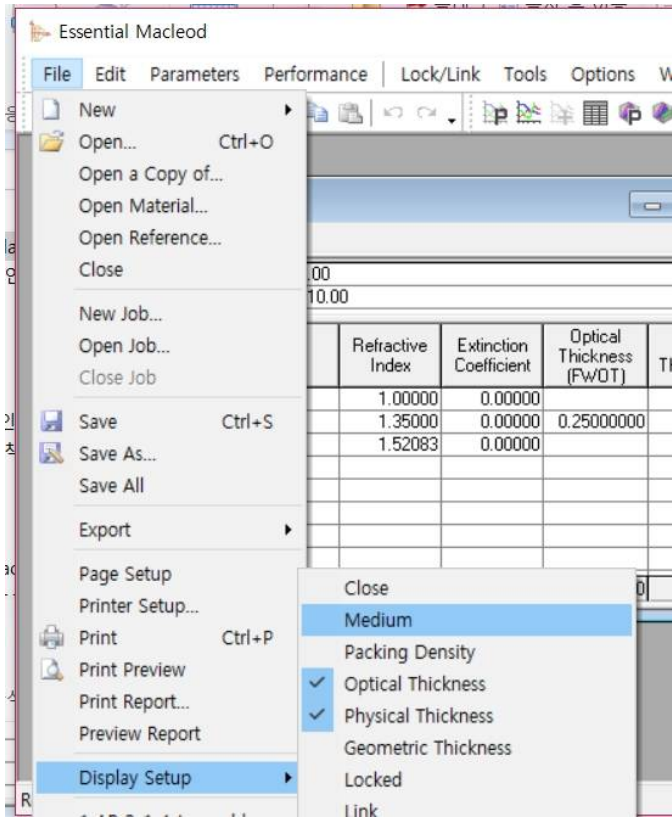


"irfilm" 으로 저장

Design File 생성



Display Setup에서 Medium 설정



Design File 작성

The screenshot shows the 'Design1' window in the software. The 'Design' tab is active. The table below shows the design parameters for a coating system. The 'Medium Thickness (mm)' column for the 'Parallel' layer is highlighted with a red box and contains the value '0.000'.

Medium Type	Layer	Material	Refractive Index	Extinction Coefficient	Optical Thickness (FWOT)	Physical Thickness (nm)	Medium Thickness (mm)	Minimum Packing Density	Maximum Packing Density
Incident		Air	1.00000	0.00000					
	1	TiO2	2.34867	0.00037	0.00000000	0.00		0.00000	0.00000
	2	SiO2	1.46180	0.00000	0.25000000	87.22			
Parallel	3	irfilm	1.00000	0.00000			0.000		
	4	SiO2	1.46180	0.00000	0.00000000	0.00			
	5	TiO2	2.34867	0.00037	0.00000000	0.00			
Emergent		Air	1.00000	0.00000					
					0.25000000	87.22			

흡수 층(IR Film)의 두께 입력과 상하로 코팅 층 추가가 가능합니다.